

VL(A)-Z316F-L/T(-M)

3-Way-Design Stainless Steel Ball Valve

Flange Connection

DN65 - DN100



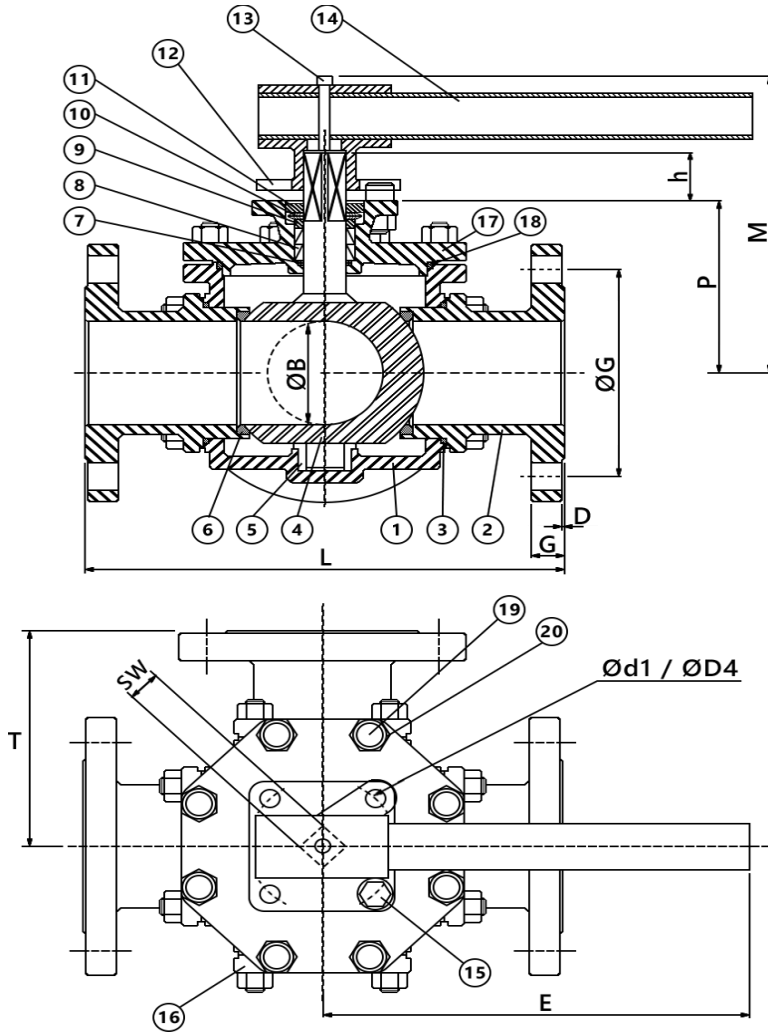
- 3-way design
- for automation application / with hand lever
- L- or T- Bore
- **Full bore (full passage)**
- Pressure range **PN16** (PN40 on request)
- Temperature range -10°C bis +200°C
- Flange acc. to DIN EN1092-1 / DIN2633

- Mounting flange acc. to ISO5211
- Anti-Blow-Out stem
- Type **VLA** usable for **Ex** - areas

On request:

- X / LL - bore
- With cavity filler, etc.

Standard		
ISO9001	PED	TA Luft
Antistatic		
On request		
FDA		



Parts list	Qty.	Material
1 Body	1	1.4408
2 Cap	3	1.4408
3 Body seal	4	PTFE
4 Ball with stem	1	1.4401
5 Centering bushing	1	RPTFE ¹
6 Ball seat	4	PTFE
7 O-Ring	1	Viton
8 Stem packing	1 Set	PTFE
9 Thrust washer	1	1.4301
10 Disc spring	2	1.4310
11 Stem nut	1	1.4301
12 Hand lever socket	1	A351 CF8
13 Screw	1	1.4301
14 Hand lever	1	Steel pipe
15 Stopper	1	1.4301
16 Blank cap	1	1.4408
17 Bonnet	1	1.4408
18 Bonnet seal	1	PTFE
19 Bolt	16	A2-70
20 Nut	16	A2-70

DN	Inch	ØB	L	T	P	M	E	FB*	ØG	D	G	h	SW	Ød1	ØD4	ISO5211	Nm	^a	kg
65	2 1/2"	62	300	150	119	210	400	4	145	3	18	25	22	11,4	102	F10	175		29
80	3"	76	305	153	137	228	500	8	160	3	20	25	22	11,4	102	F10	191		37
100	4"	98	368,5	185	157	248	650	8	180	3	20	25	22	11,4	102	F10	308		60

Dimensions in mm

* FB=Flange drilling
^a incl. 30% Safety factor
 → for further informations please see the torque chart.