

VL(A)-Z316F-L/T(-M)

3-Way-Design Stainless Steel Ball Valve

Flange Connection

DN15 - DN50



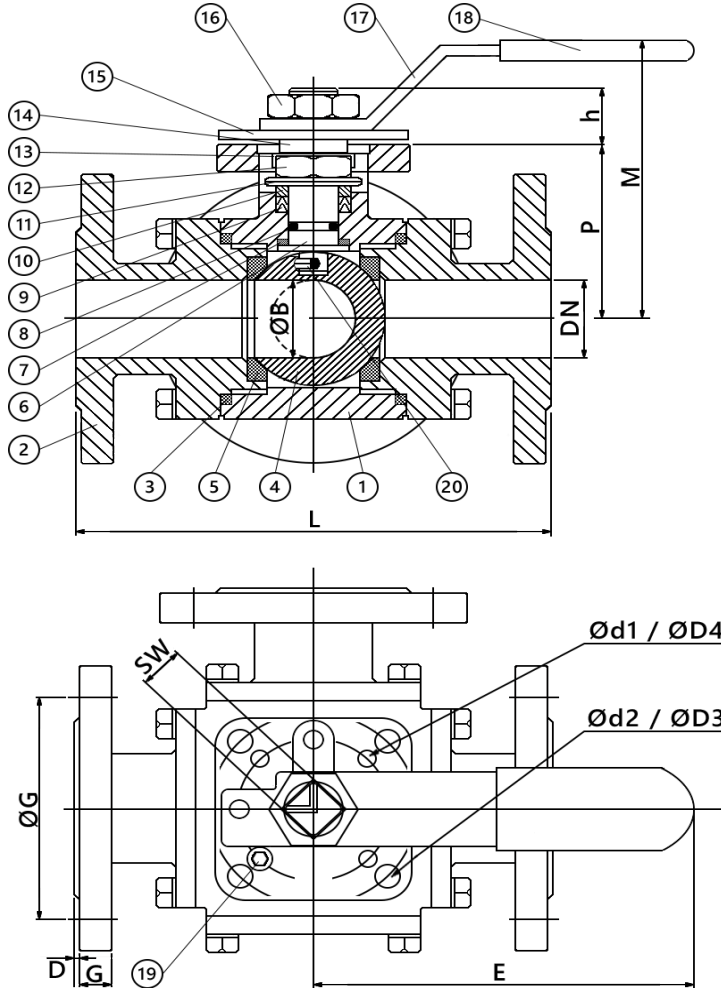
- 3-way design
- for automation application / with hand lever
- L- or T- Bore
- **Full bore (full passage)**
- **Pressure range PN16** (PN40 on request)
- Temperature range -10°C bis +200°C
- Flange acc. to DIN EN1092-1 / DIN2633

- Mounting flange acc. to ISO5211
- Anti-blow-out stem
- Type **VLA** usable for **Ex** - areas

On request:

- X / LL - Bore
- With cavity filler, etc.

Standard		
ISO9001	PED	TA Luft
Antistatic		
On request		
FDA		



Parts list	Qty.	Material
1 Body	1	1.4408
2 Cap	3	1.4408
3 Body seal	3	PTFE
4 Ball	1	1.4408
5 Ball seat	4	PTFE
6 Stem	1	1.4401
7 Thrust washer	1	RPTFE
8 O-Ring	1	Viton
9 Stem packing	1 Set	PTFE
10 Gland ring	1	1.4301
11 Disc spring	2	1.4301
12 Gland nut	1	1.4301
13 Retainer	1	1.4301
14 Gland ring	1	1.4301
15 Stop plate	1	1.4301
16 Nut	1	1.4301
17 Hand lever	1	1.4301
18 Sleeve	1	Vinyl plastic
19 Stopper	1	1.4301
20 Lock pin	1	1.4401

DN	Inch	L	ØB	P	M	E	FB*	ØG	D	G	h	SW	Ød1	Ød2	ØD3	ØD4	ISO5211	Nm	^a
15	1/2"	160	15	41	62	130	4	65	2	14	11	9	6	6	42	36	F03/F04	13	
20	3/4"	177	20	49	82	165	4	75	2	16	14	11	6	7	50	42	F04/F05	16	
25	1"	190	25	55	89	165	4	85	2	16	14	11	6	7	50	42	F04/F05	32	
32	1-1/4"	208	32	63	98	205	4	100	2	16	18	14	7	9	70	50	F05/07	35	
40	1-1/2"	234	38	74	108	205	4	110	3	16	18	14	7	9	70	50	F05/07	55	
50	2"	273	50	93	140	325	4	125	3	18	23	17	9	11	102	70	F07/F10	72	

Dimensions in mm

- FB=Flange drillings
- ^a incl. 30% Safety factor
- for further information please see the torque chart.